

Creating a special occasion landscape

Highland Outdoor, a Kansas City-based landscape and design/build firm, was contacted by a new client in Olathe to design and construct an outdoor living area. The family was preparing their home for a spring event celebrating the graduation of their oldest child. With that in mind, the project needed to integrate well into the existing landscape and hardscape, yet provide the added entertaining areas for family and friends.



A view from the house.

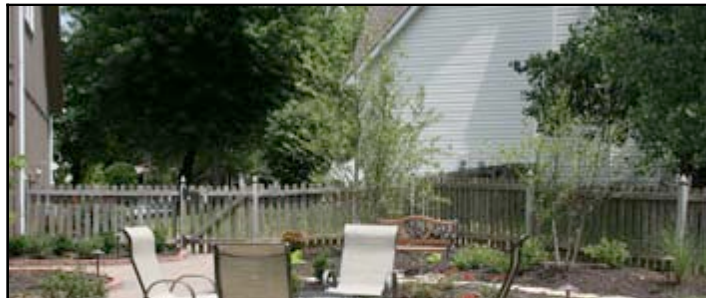
Certified Landscape Professional Jason Cupp and Landscape Designer Brent Menghini of Highland Outdoor worked with the client to prepare a plan that fit the family's needs as well as their budget.

As Brent worked with the client, he identified different elements that ultimately were included in the final project. Included in the client's desires were a fire pit, a water feature and additional patio areas as well as lighting, irrigation and complementary landscape.

Ultimately, the client approached our company because they wanted to extend their

outdoor living space. They already had a patio that sits under a shade structure with walkways but they wanted to extend this, which meant we had to find a way to make a transition. Since the patio's surface was concrete and the walkways were pavers, they wanted to add a patio with a portable fire pit. We chose a paver color that complemented the concrete and the other paver material. We decided to design the patio in a perfect circle to make it feel like another room, which would be spacious enough for a fire pit and chairs to sit around.

The next





A circular patio

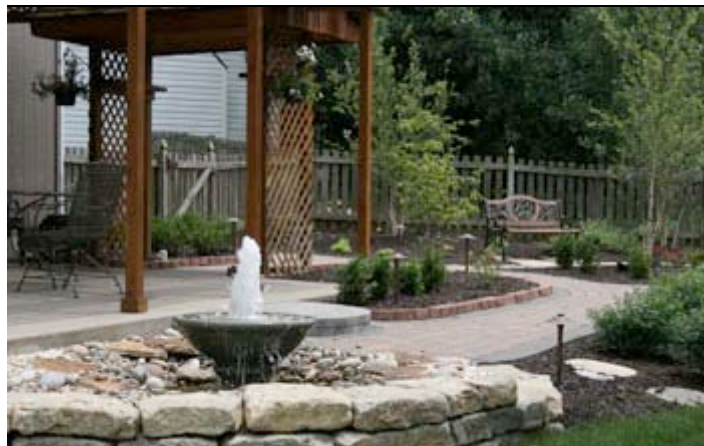
element was installing a fountain by the existing patio to give a focal point when sitting in the yard and to hear the soothing noise of the fountain. This water feature was also placed in the area so that it would be visible from the windows inside the house. The




New fountain, soothing sounds.

fountain was integrated into a natural stone retaining wall and landscape to tie in the rest of the yard. Toward the end of the project, the closer we got to installing the fountain, we made a design change using a bowl we filled it with rock and made a stone overflow area, which is more natural. It also fit the setting better, gave a more appealing look, and water spouted out the top into the pit to re-circulate.

To tie these elements together with the rest of the landscape, we used a natural setting for the landscape. On one side there is a walking path through the landscape bed to a seating area with a bench that is shaded by trees. Among other plants that were

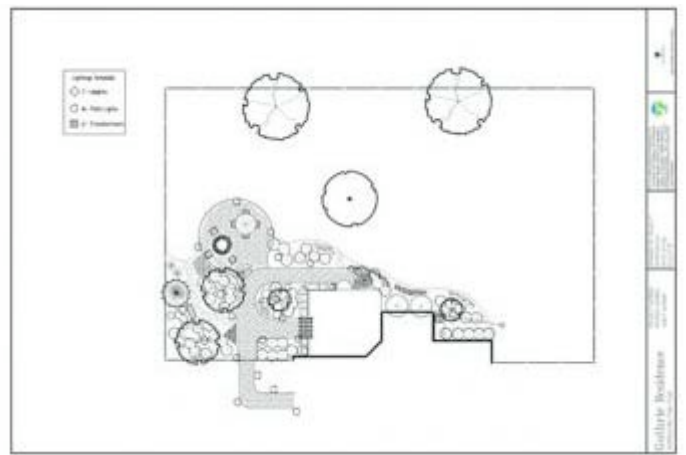




Tying it into the landscape.

chosen were river birches to give a natural feel as well as a unique characteristic with the bark. The use of evergreens throughout the project was also used to provide greenery year around. Some of the other plant materials were used to provide color for different seasons such as sweet bay magnolias, phlox, and burning bush. The different height variation allowed for a comprehensive design for maximum visual impact. Under the trees are plantings to provide different textures, flowering shrubs and different perennials. The landscape beds had a natural edge, which made the beds flow into the grass areas, and were top-dressed with dyed mocha hardwood oak chips.

We worked with one of our subcontractor partners, Outdoor Lighting Perspectives, to install the landscape lighting. This was designed together to enhance the safety and illuminate the landscape be enjoyed in the evenings.



Lighting plans.

Highland Outdoor, specialists in outdoor living areas and landscaping, with focus on design and architecture, can be reached at sales@highland-outdoor.com or 913-782-3700. View project portfolios and company information online at <http://www.highland-outdoor.com>.

Submitted by admin on Fri, 2007-07-13 17:14.
Landscape Project | [login](#) or [register](#) to post comments